

**A well equipped support vessel for marine construction, engineering, repair, diving and maintenance work.**

Our multi-cat Shake Dog - named for the owners' children, Sam, Holly, Abby, Kate & Emma - arrived on the Thames in June 2012 and had a major refit and drydocking in May 2015. During the refit she had a new 68t/m crane fitted, and had a full ultrasonic survey. She also had internal improvements including a new galley and upgraded crew accommodation.

She has proved herself a rugged workhorse time and again, from her first job removing and re-instating moorings for super yachts in the royal Victoria and Albert dock in London, to assisting with the extension of Felixstowe port's quay. On the way she has assisted with the lift of a WWII bomber from Goodwin Sands on behalf of the RAF, and transported a 4 ton metal plug along the Thames, you can read about that project here.

As well as working locally on the Thames and South-East, Shake Dog is licensed to work in the North Sea, on the South Coast and in all UK and Ireland ports including (but not limited to!) the Port of London, Portsmouth, Southampton, Ramsgate, Plymouth, Liverpool, Ireland, Cork, Glasgow, Aberdeen, Shetland Islands, Newcastle, Tyne, Great Yarmouth, Scarborough, Grimsby, Hull, Ipswich, Lowestoft, Medway, Dover and Milford Haven.

Additionally we can also travel to most major European ports.

## Vessel Specification

### Dimensions

Length	Beam	Draught	Air Draught
19.1m	8.3m	2.4m	6.2m

### Main engines

2 x Caterpillar 3408 DITA 326 via fixed blade props producing 12 ton bollard pull.



## Features

TMC 680-5 Crane

1 \* 30 ton winch & 1 \* 10 ton winch

5 ton capstan

180 kva genset & 60 kva genset

Fuel capacity 14 ton, water capacity 3 ton, fuel and water bunkering available

Oxy acetylene cutting burning welding gear onboard

30cm moon-pool

Huge deck area for fetch and carrying large enough to hold 2 x 20ft containers

11m spud pole for mooring

Deck tannoy system

Push bow fenders and after push fenders

8ft x 8ft x 6ft removeable secured deck container

68 t/m hydraulic crane

Self-loading TL38 Cherry Picker work platform with capability to take 2 people from river level to 44ft.

## Safety equipment

Emergency bilge pumps and alarms MSA approved first aid kit

Jason's cradle and davit retrieval arm 4 survival suits

4 life rings with light and smoke pot 4 life rings with 18 metres of line

4 standard life rings Anchor and chain

4 thermal protection aids Torch

Boat hook

## Navigational equipment

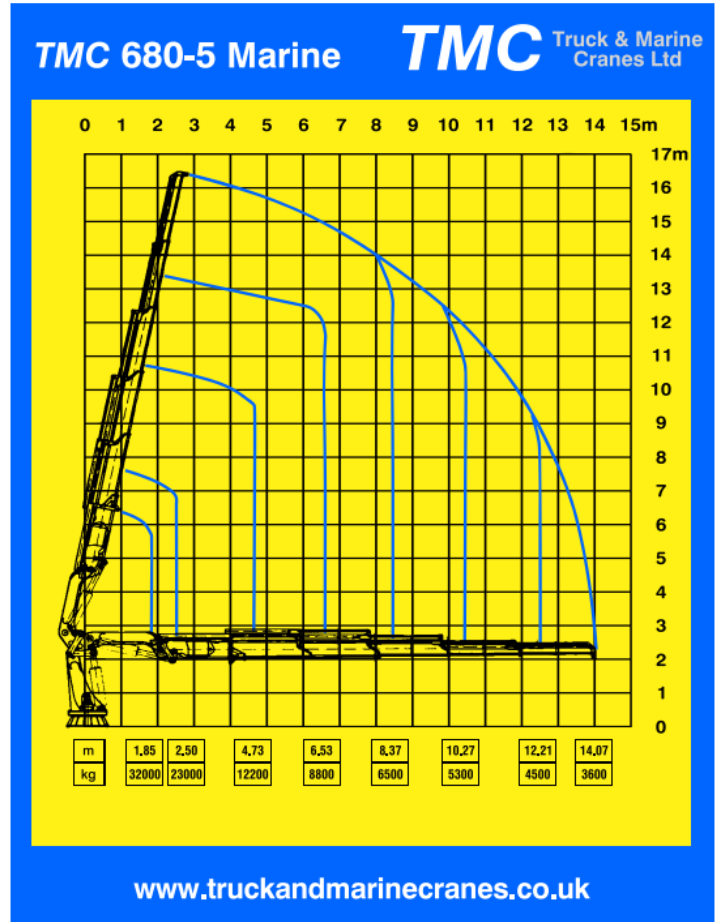
AIS

2 x fixed installation icom VHF's and one hand held VHF Radar

Chart plotter Echo sounder

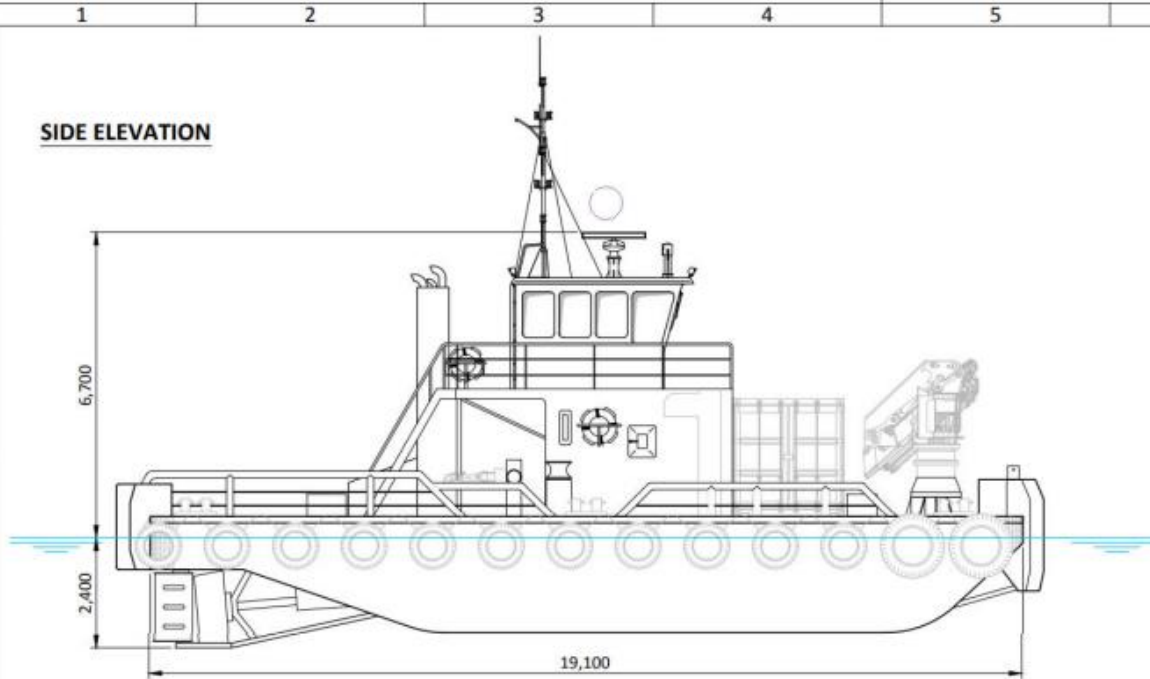
## Suitable for use as

Bridge survey boat, dive boat, film and camera boat, windfarm support vessel, and many other roles.

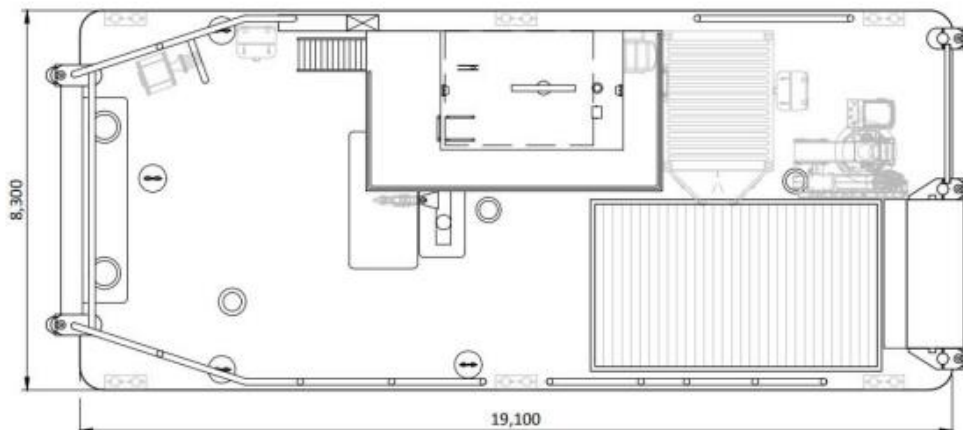


# MPV SHAKE DOG BROCHURE

**SIDE ELEVATION**



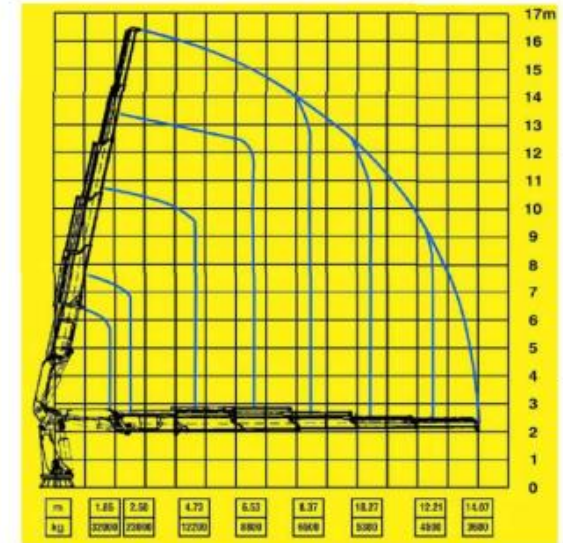
**PLAN VIEW**


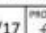


**SPECIFICATION**

NAME: M.P.V. SHAKE DOG  
 CLASS: SOCIETY OF CONSULTING MARINE ENGINEERS & SHIP SURVEYORS (SCMS) 60NM FROM SAFE HAVEN  
 FLAG: UK  
 PORT OF REG.: LONDON  
 CALL SIGN: 2FSPS  
 IMO: 8434178  
 LENGTH: 19.10m  
 BEAM: 8.30m  
 DRAUGHT: 2.40m  
 AIR DRAUGHT: 6.70m  
 TONNAGE: 79GRT / 23NRT  
 BOLLARD PULL: 12.50 Tons

**DECK CRANE LOAD CAPACITY CHART**



 <p>0800 019 15 16 / 01689 898 959 MARINESERVICES@CPBS.CO.UK</p>	<p>TITLE <b>MPV SHAKE DOG GENERAL ARRANGEMENT DIAGRAM</b></p>			
	<p>DRAWN BY <b>MCC</b></p>	<p>DATE <b>18/02/17</b></p>	<p>PROJECTION </p>	<p>STATUS <b>FOR USE</b></p>
	<p>CHECKED BY <b>WMC</b></p>	<p>DATE <b>21/02/17</b></p>	<p>UNITS <b>mm / °</b></p>	<p>REVISION <b>0</b></p>
	<p>APPROVED BY <b>SNE</b></p>	<p>DATE <b>21/02/17</b></p>	<p>SCALE <b>1:100</b></p>	<p>SHEET/OF <b>01/01</b></p>
			<p>DRAWING REFERENCE <b>SHAKEDOG-001</b></p>	