

# GENERAL ARRANGEMENT

DSME

DSME

DSME

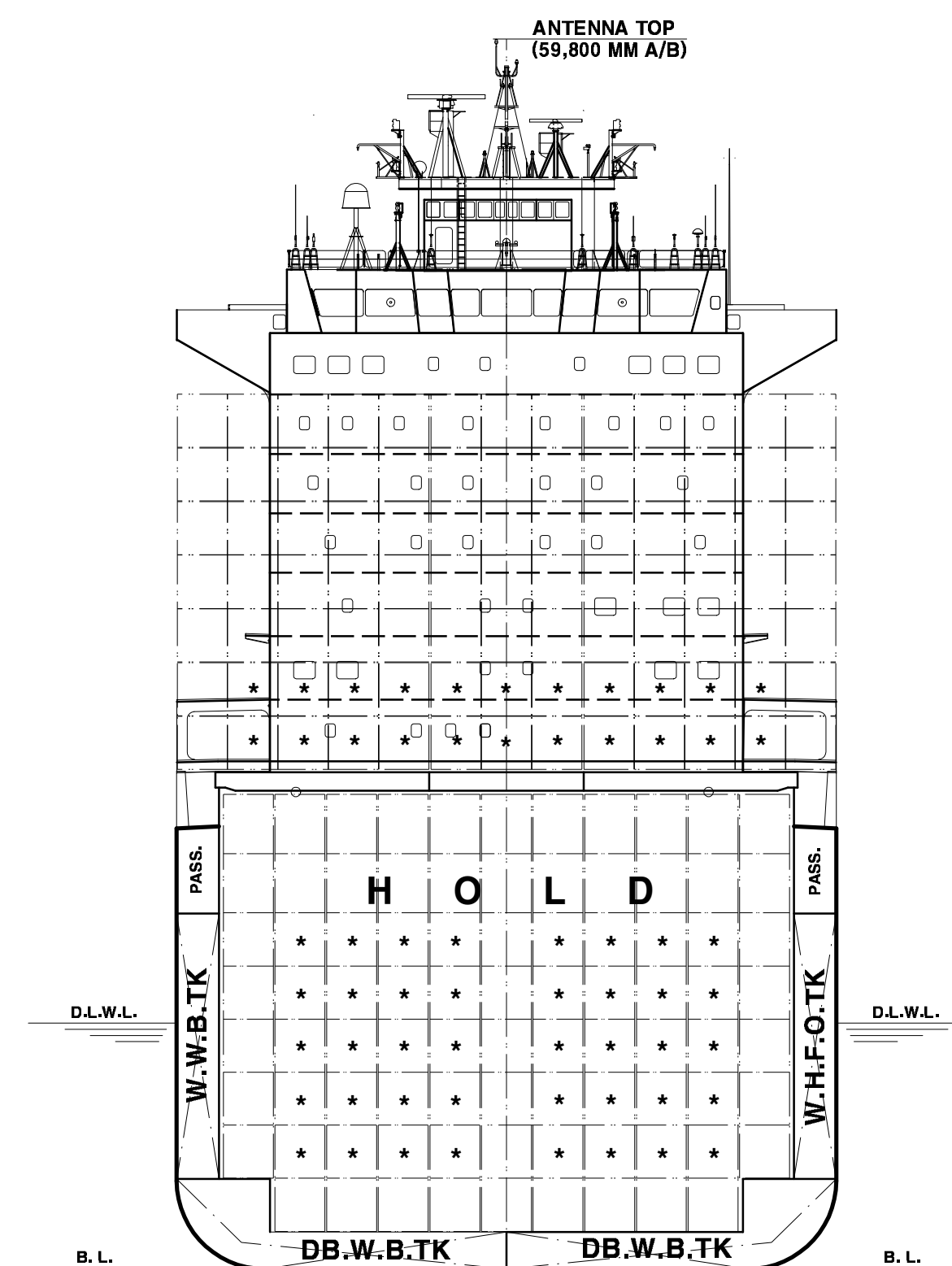
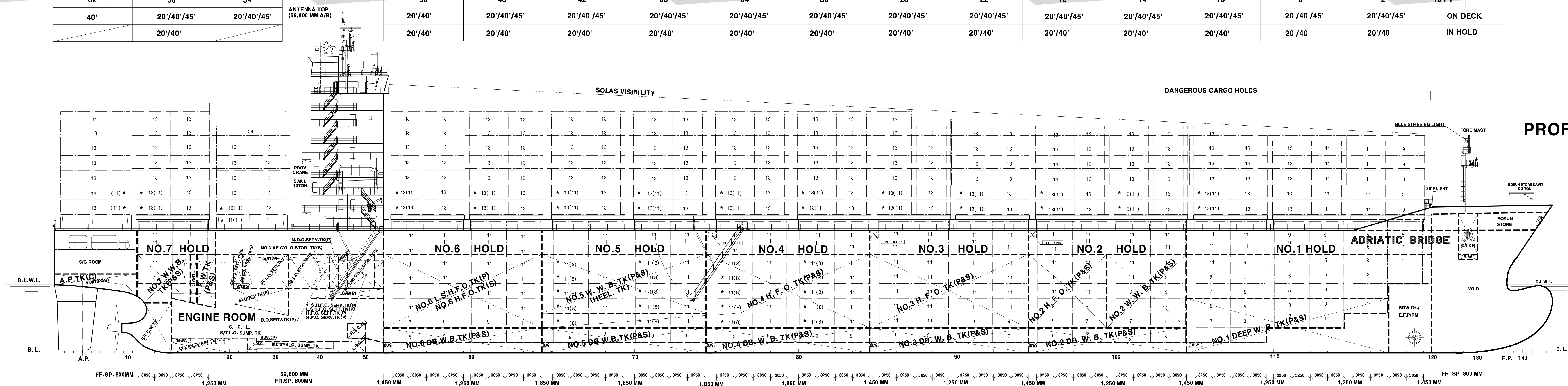
DSME

DSME

DSME

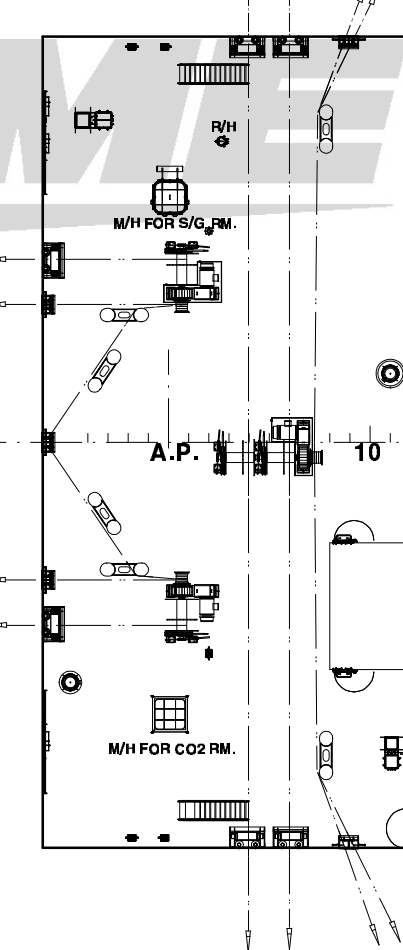
59	57	55	53
62	58	54	
40'	20'/40'/45'	20'/40'/45'	
	20'/40'		

51	49	47	45	43	41	39	37	35	33	31	29	27	25	23	21	19	17	15	13	11	9	7	5	3	1	20 FT	BAY NO.	
50	46	42	38	34	30	26	22	18	14	10	6	2															40 FT	ON DECK
20'/40'	20'/40'/45'	20'/40'/45'	20'/40'/45'	20'/40'/45'	20'/40'/45'	20'/40'/45'	20'/40'/45'	20'/40'/45'	20'/40'/45'	20'/40'/45'	20'/40'/45'	20'/40'/45'	20'/40'/45'	20'/40'/45'	20'/40'/45'	20'/40'/45'	20'/40'/45'	20'/40'/45'	20'/40'/45'	20'/40'/45'	20'/40'/45'	20'/40'/45'	20'/40'/45'	20'/40'/45'	20'/40'/45'	20'/40'		IN HOLD

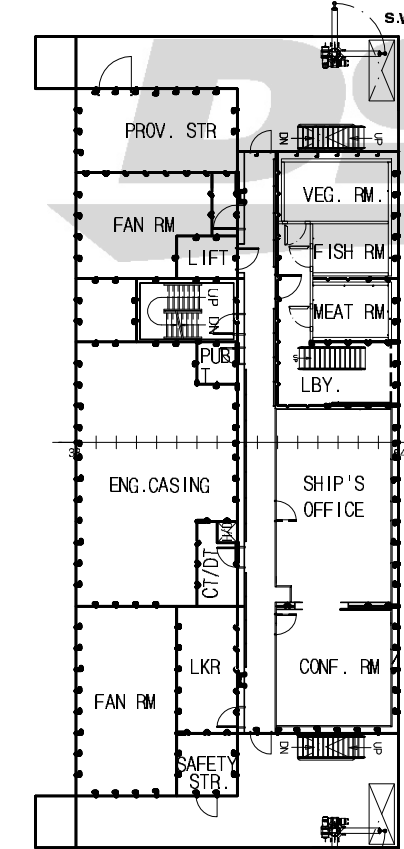


MIDSHIP SECTION

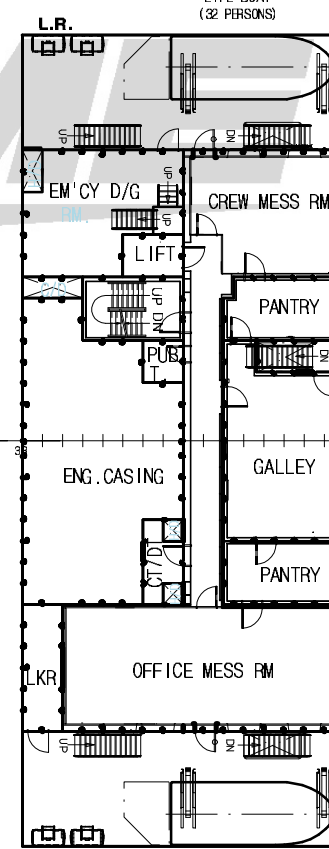
MOORING DECK



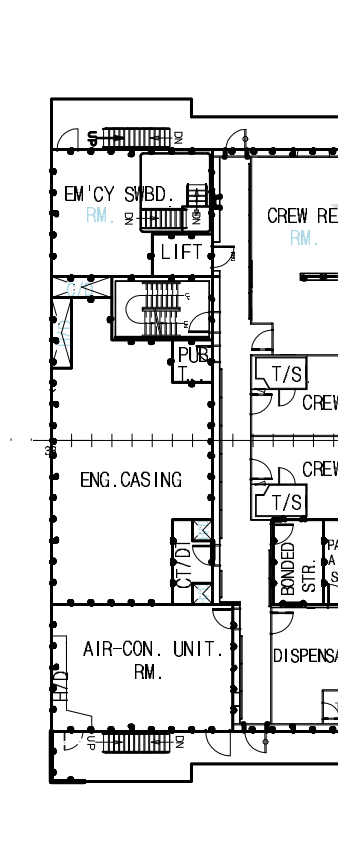
A DECK



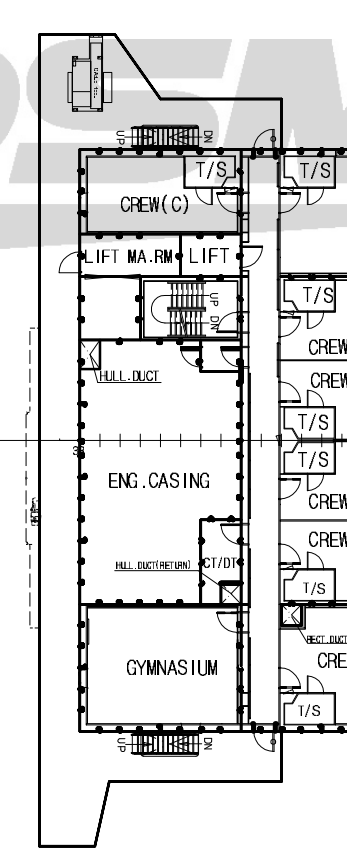
B DECK



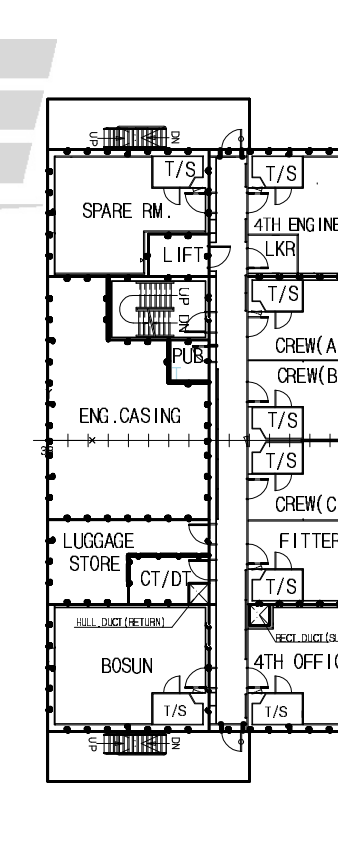
C DECK



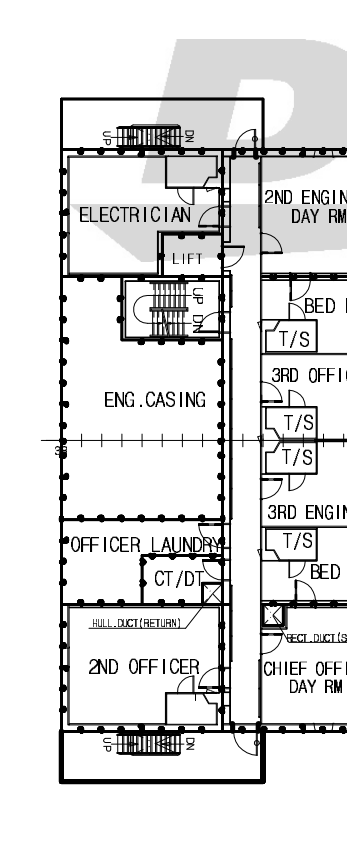
D DECK



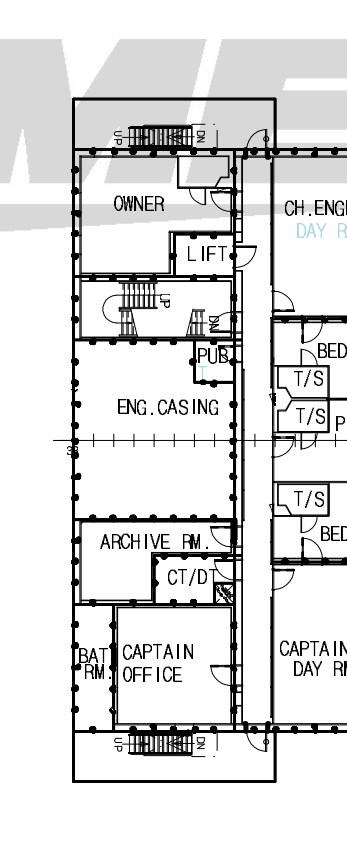
E DECK



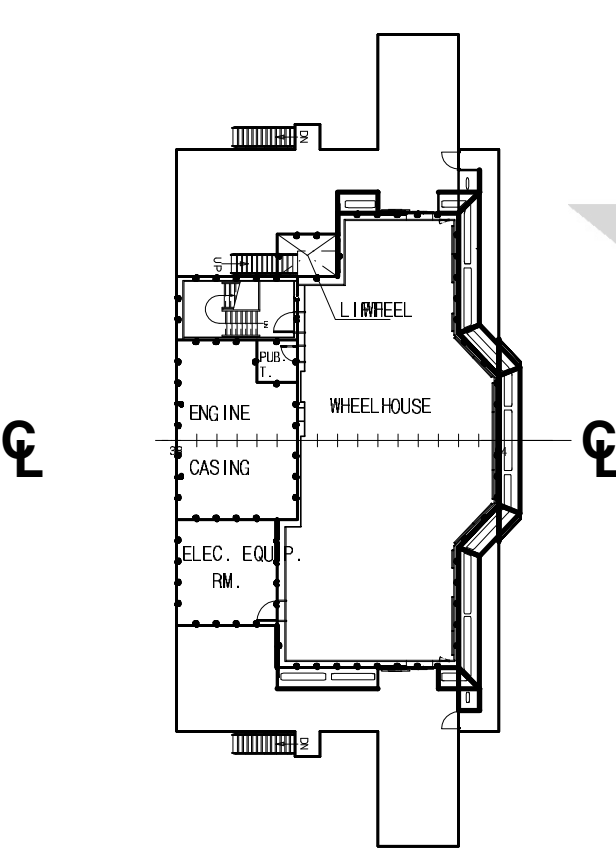
F DECK



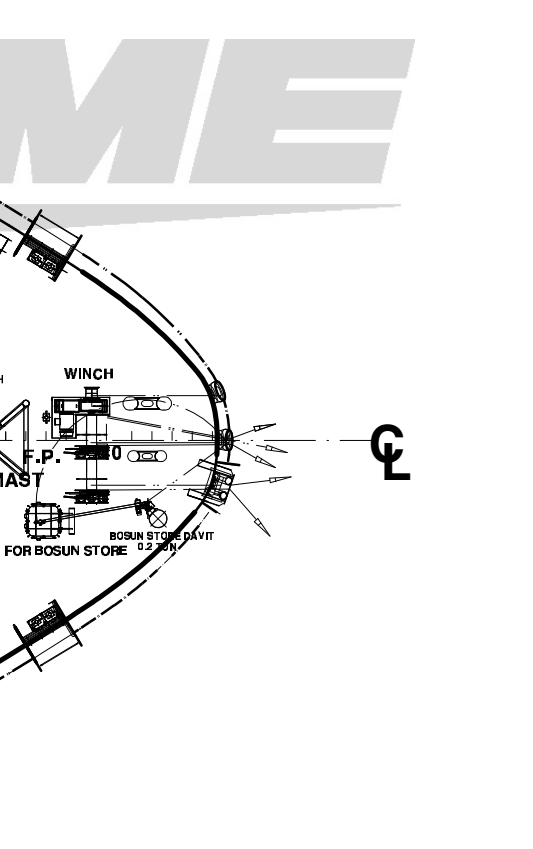
G DECK



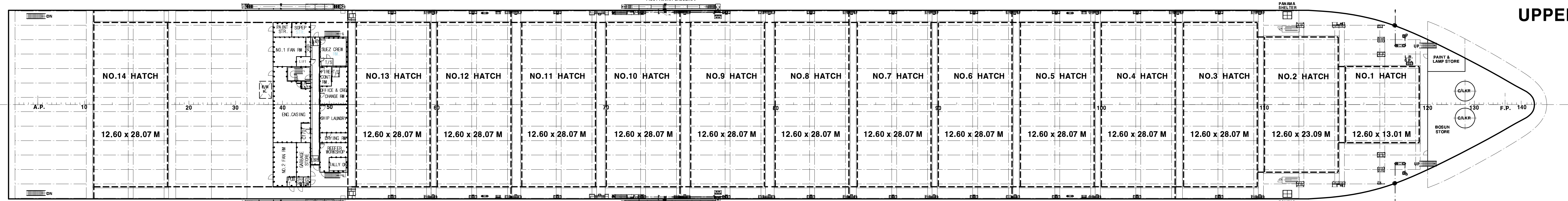
NAV. BRI. DECK



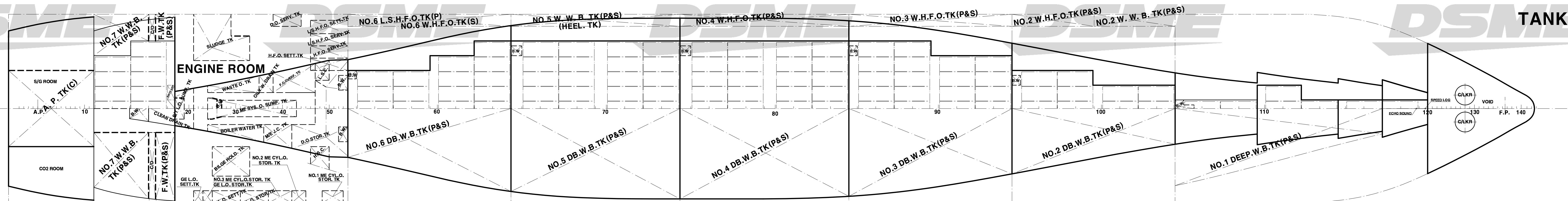
F'CLE DECK



UPPER DECK



TANK TOP



## PRINCIPAL DIMENSIONS

LENGTH	O.A.	approx.	264.320 M
LENGTH	B.P.		251.000 M
BREADTH	(MLD)		32.200 M
DEPTH	(MLD)		21.500 M
DRAFT	DESIGN (MLD)		12.000 M
	SCANT. (MLD)		13.500 M

SERVICE SPEED : 24.0 knots at the Designed Draft

MAIN ENGINE TYPE : MAN B&W 8K90MC-C6 x 1 SET  
MCR : 36,560 KW X 104.0 RPM  
NCR : 32,900 KW X 100.4 RPM

## CLASSIFICATIONS

Germanischer Lloyd (GL)  
+100A5, "Container Ship", +MC, AUT, IW, BW, M,  
"SOLAS II-2, Reg. 19". NAV-O

## COMPLEMENT

30 Persons + 6 Suez Crews

THIS DRAWING OR DOCUMENT IS THE PROPERTY OF DAEMOO SHIPBUILDING & MARINE ENGINEERING CO., LTD. AND MUST NOT BE REPRODUCED OR COPIED IN ANY FORM OR BY ANY MEANS WITHOUT PRIOR WRITTEN PERMISSION OF DSME.

HEAL NO.	4140	PROJECT	NRS 4,600 TEU CONTAINERSHIP
APPRO BY	H.K. SEO	TITLE	GENERAL ARRANGEMENT
Q-NO BY	J.H. LEE		
OWN BY	I.H. CHOI		
DEPT	BASIC SHIP DESIGN TEAM	DATE	2009-03-10
		SCALE	1/300
		DWG NO.	DA1012029
		REV. NO.	0

POSITION OF REFRER MACHINERY

K-1410 GENERAL ARRANGEMENT 01/2009 1/15/2009